



vFire 9.8

Prerequisites Guide

Version 1.1

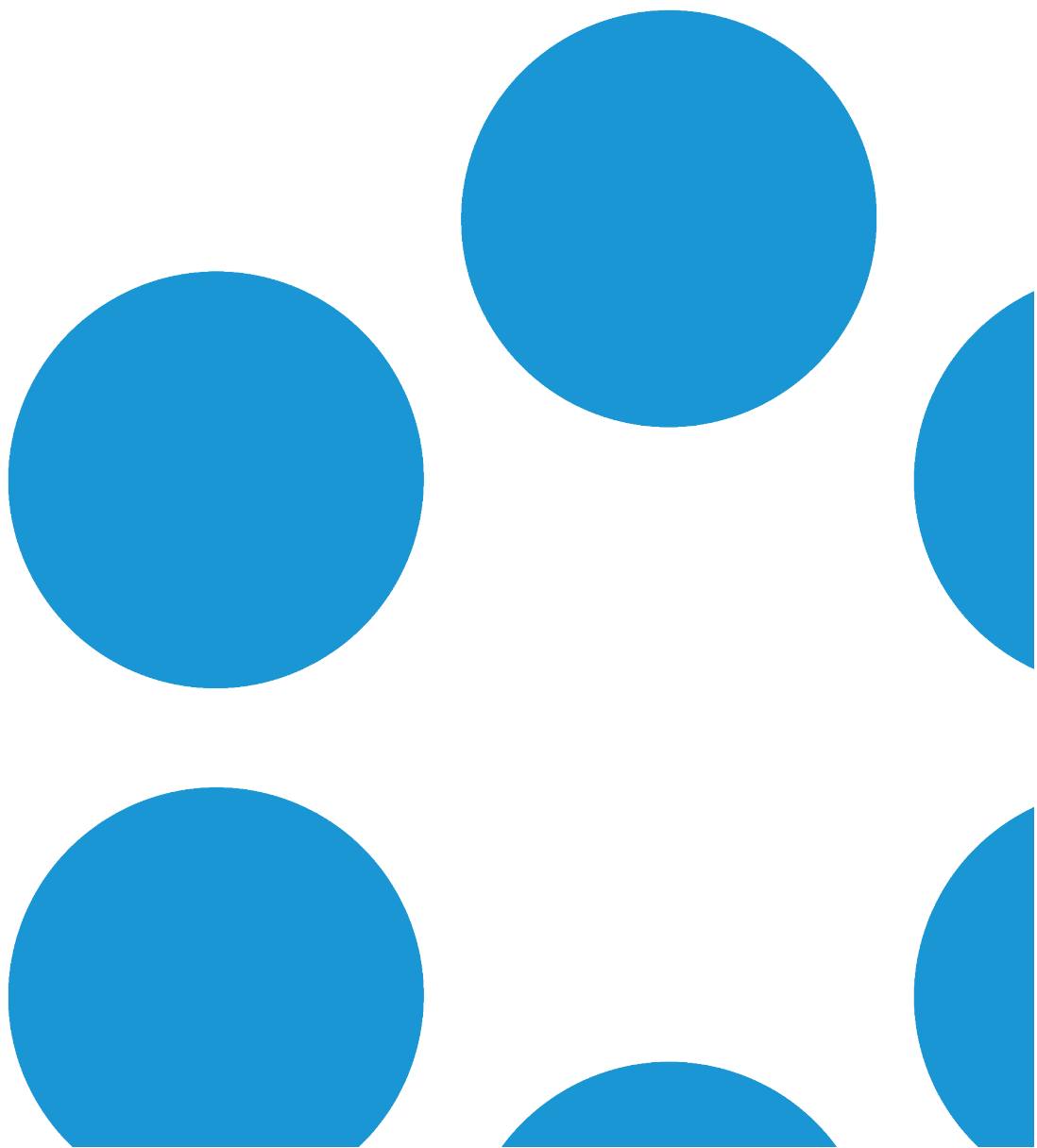




Table of Contents

Version Details	4
Copyright	4
About this Guide	5
Intended Audience	5
Standards and Conventions	5
Introduction	6
Web Server Deployment	7
Hardware Requirements	7
Operating System Requirements	8
Running vFire on Virtualized Servers	8
PowerShell Requirements	9
Additional Requirements	9
Additional Requirements for Oracle	9
Web Server FAQs	10
Database Server Requirements	11
Hardware Requirements	11
Database Engine Requirements	12
Network Location	13
Client Requirements	14
vFire Core	14




vFire Self Service	15
Minimum Supported Browser Versions	15
vFire Universal Access Appliance	16
vFire Officer and Portal	16
Client Prerequisites for Microsoft Office Integration	17
Local Screen Resolution	17
Email Server Requirements	18
Configuring the Server	19
User Directory Servers	30
vFire Officer App Prerequisites	31
vFire App Prerequisites	32
Further Information	34
Product Information and Online Support	34
Technical Support	34
Comments and Feedback	34



Version Details

This guide supports the version of the product listed, and supports all subsequent versions until the document is replaced by a new edition. The table below contains version details for the guide.

Version Number	Date	Details
1.0	17 May 2017	<p>This version of the Prerequisites Guide documents the prerequisites for version 9.8.xx of vFire Core and vFire Officer & Portal. It contains the following updates to the prerequisites for earlier software releases:</p> <ul style="list-style-type: none"> • vFire Universal Access prerequisites have been added to the Client Requirements. See page 16 for more details. • Screen resolution should be configured to a minimum screen resolution height of 700 to ensure that users can access the scroll bar in submenus in the new vFire Menu display. See page 17 for more details. • Instructions for configuring your server are provided here as well as in the Installation Guide, for the convenience of those users who are preparing their environment prior to installation. <p> vFire 9.8 supports Oracle installations.</p>
1.1	18 May 2017	Update to the minimum hardware requirement


Copyright

Copyright © Alemba Limited (or its licensors, including ©2010 - 2017 VMware, Inc). All rights reserved. This product is protected by U.S. and international copyright and intellectual property laws. VMware products are covered by one or more patents listed at: <http://www.vmware.com/go/patents>. VMware is a registered trademark or trademark of VMware, Inc. in the United States and/or other jurisdictions. VMware Service Manager™ is also trademark of VMware, Inc. Alemba™, vFire™ and vFireCore™ are trademarks of Alemba Limited (vFire Core™ is developed by Alemba Limited from VMware, Inc's product "VMware Service Manager", under licence from VMware, Inc). All other marks and names mentioned herein may be trademarks of their respective companies.



About this Guide

This guide describes the software and hardware requirements for the current version of vFire, vFire Self Service and the vFire apps.




 This version of the guide contains instruction for the latest version of the vFire software. If you are running an earlier version of vFire please refer to alemba.help.

Intended Audience

This guide is written for system administrators responsible for installing vFire, vFire Self Service, and the vFire apps.

Standards and Conventions

The following standards and conventions are used throughout the guide:

	Prerequisites, including security rights and access you may need prior to completing the task. Prerequisites are also highlighted in a shaded box.
	Information related to the current topic that may be of particular interest/significance. Notes are also highlighted in a shaded box.
	Warnings. These are also highlighted in a shaded box.
Field name	Fields are highlighted in bold text.



Introduction

This document describes the requirements for the current version of vFire Core, vFire Officer & Portal, and the vFire app software, and should be read prior to installation to ensure that your hardware, server and client requirements are met.

Minimum recommended specifications are given for each requirement. In some instances, such as Hardware CPU and memory, you can use a higher spec than the minimum recommended in order to increase your system's performance.

If you have any further questions regarding prerequisites, please contact the Alemba Service Desk.



Web Server Deployment

This section details the hardware and operating system requirements for running the Web Server component of vFire Core (that is, the main application). Multiple web servers can be configured under a load-balancer; contact Alemba Support for consultation on the best configuration for individual requirements.

We recommend that you install the database on a separate dedicated server.

Hardware Requirements

vFire Core requires a x64 Windows server. The minimum web server hardware requirements for vFire Core are listed below.



This is the recommended **minimum**. If your site has a large volume of data, you should consider using hardware with a higher specification.


Hardware	Minimum Requirement
CPU	Dual Core 2.3 GHz
Memory	16 GB RAM
HD	4 GB of available space



Operating System Requirements


Below are the minimum requirements for the operating system.

Operating System	IIS Version	Hardware	Additional Requirements
Windows Server 2008 R2 (64-bit)	IIS 7.5	x64	.NET 4.5.2;
Windows Server 2012	IIS 8.0		MMC 3.0 or above;
Windows Server 2012 R2	IIS 8.5		PowerShell 5.

 Upgrading Windows Server 2008 to Windows Server 2012 is not a supported Server upgrade path. We recommend that you always create a new machine for a change in the operating system of a server rather than upgrading.

Running vFire on Virtualized Servers

Virtual machines are supported when the guest operating system is supported by vFire Core and the virtual machine vendor. As a minimum, you should have 2 CPUs and 16GB of RAM on your virtual machine. Ensure that the CPUs are not over committed.

 Your virtual directory must be configured correctly to ensure smooth upgrade of .NET to 4.5.2. See the **Installation and Upgrade Guide** for more details.



PowerShell Requirements

You must be running PowerShell 5.0 or above on the web server.

If PowerShell is already installed on your server, you can identify which version you are running by starting a PowerShell session (key **PowerShell** into your search bar and select the app), and then typing **Get-Host** at the command prompt. The version number will be displayed along with the rest of the app information.

```

Select Windows PowerShell
Windows PowerShell
Copyright (C) 2016 Microsoft Corporation. All rights reserved.

PS C:\> Get-Host

Name       : ConsoleHost
Version    : 5.1.14393.953
InstanceId : 36f8ec92-e2ee-43ed-834c-a22458236aa8
UI         : System.Management.Automation.Internal.Host.InternalHostUserInterface
CurrentCulture   : en-GB
CurrentUICulture : en-GB
PrivateData     : Microsoft.PowerShell.ConsoleHost+ConsoleColorProxy
DebuggerEnabled : True
IsRunspacePushed : False
Runspace       : System.Management.Automation.Runspaces.LocalRunspace
  
```

To upgrade to, or install version 5, you will need to install the Windows Management Framework (WMF) 5.0 or higher. You can identify and download the package you require for your OS platform here - <https://msdn.microsoft.com/en-us/powershell/wmf/5.0/requirements>.

Additional Requirements

The web server must include Internet Explorer 11 or above.



Although this version of Internet Explorer is not supported by Microsoft for Windows Server 2012, it can be downloaded and installed with only limited impairments to functionality.

Install all language packs associated with the non-English characters used by Analysts at sites that use Unicode databases. This enables the indexing service on the web server to perform indexing correctly.

Additional Requirements for Oracle

On new web servers, install the 64-bit Oracle Client. Alemba recommends selecting the 'Administrator' install type option when prompted by the Oracle Client installer. ODAC is not required on the web server when the Oracle Client is 64-bit.



On web servers where the 32-bit Oracle Client is installed, you must also install 32-bit ODAC 12c. Alemba recommends ODAC 12c Release 3 and Oracle Developer Tools for Visual Studio (12.1.0.2.1) <http://www.oracle.com/technetwork/topics/dotnet/utilsoft-086879.html>.

Web Server FAQs

? What are the web server prerequisites for setting up production and test environments for vFire Core?

You should install the production environment on its own web server or virtual machine and install the test environment on other servers. When testing an upgrade of vFire Core, a separate test environment will ensure the integrity of any customizations that have been applied in the production environment.

? What are the web server prerequisites for vFire Core to support POP3/IMAP/SMTP over SSL?

The web server should be able to communicate with the POP3/IMAP/SMTP server.

? How should the web server be optimized?

Alemba recommends optimizing the web server for background service performance.



Database Server Requirements

This section details the requirements for running the database component of the current release of vFire Core.



We recommend that you install vFire Core on a separate server to the database server.





Hardware Requirements

Your database vendor's documentation should provide the minimum recommended hardware configuration required for the database version you intend to deploy.



Database Engine Requirements

vFire Core supports the following database engines.

	9.2.0	9.2.1	9.2.2	9.2.3	9.3	9.4	9.5	9.6	9.7	9.8
SQL Server 2008 SP1 , 2008 R2 (32 or 64 bit)  See SQL Server Requirements in the online help below.	Y	Y	Y	Y	Y	Y	Y	Y	Y*	Y*
SQL Server 2012 (64 bit)  See SQL Server Requirements in the online help below.	Y	Y	Y	Y	Y	Y	Y	Y	Y	Y
SQL Server 2014 (64 bit)  See SQL Server Requirements in the online help below.	Y	Y	Y	Y	Y	Y	Y	Y	Y	Y
SQL Server 2016 (64 bit)  See SQL Server Requirements in the online help below.	N	N	N	N	N	N	Y	Y	Y	Y
Oracle 11g R1 or R2	Y	Y	Y	Y	N	Y	N	Y	N	Y
Oracle 12c	Y	Y	Y	Y	N	Y	N	Y	N	Y

 * SQL Server 2008 is not supported if you are using the Alemba API.

SQL Server Requirements

SQL Server 2008 requires **Full-Text Search** to be enabled in the Feature Selection section.



SQL Server 2012 and above requires the **Full-Text and Semantic Extractions for Search** feature to be enabled.

vFire Core does not support SQL Server Express editions.

Network Location

The network location of the database server to the vFire Core server will have an impact on performance. Network switching and firewall configurations need to be considered in the design of the system.



Client Requirements

This section details the client requirements for the current release of vFire Core.

vFire Core

The current release of vFire Core is supported on Microsoft Windows clients with the following browser and operating system combinations.

Internet Explorer 32-bit and 64-bit browsers are supported. By default, vFire Core runs in 32-bit mode in Internet Explorer. The 64-bit client is available as a separate installer, but is not automatically deployed.

	Windows Vista	Windows 7	Windows 8.1	Windows 10
Internet Explorer 9	Y*	N	N	N
Internet Explorer 11	N	Y	Y	Y

* Microsoft documents that extended support for Vista ends in April 2017.

! You must use Internet Explorer 11 version 11.0.9600.17031 or higher to run Nano without errors.

! Designer is not compatible with Vista and Internet Explorer 9. A known limitation with vFire Core and Vista/IE9 prevents screens rendering correctly in Designer.

ActiveX Support

The current release of vFire Core client requires permission to download and execute signed ActiveX controls. If this is not feasible, you can install the ActiveX controls using the available MSI package.

You need to configure browser settings for vFire Core (internet and intranet) to download ActiveX controls. Follow these steps.

1. In Internet Explorer, go to the **Tools** menu and select **Internet Options**.
2. In the **Security** tab, highlight the **Internet** or **Local Intranet** security level icons, depending on where the web server is located.
3. Click on the **Custom Level** button. The **Security Settings** window is displayed.



- Select the option to enable or prompt for **Download Signed ActiveX controls**.



vFire Core signs its controls so that they are regarded as trusted controls. This should not affect the majority of sites, as most people will not have modified their default settings.

vFire Self Service

The current release of vFire Self Service is supported on the following browser and operating system combinations.

	Windows Vista	Windows 7	Windows 8.1	Windows 10	Mac
Internet Explorer 9	Y	N	N	N	N
Internet Explorer 11	N	Y	Y	Y	N
Windows Edge	N	N	N	Y	N
Firefox	Y	Y	Y	Y	Y
Chrome	Y	Y	Y	Y	Y
Safari	N	N	N	N	Y

Minimum Supported Browser Versions

This list describes the minimum supported browser versions for the vFire Self Service portal. All versions above the ones listed are supported.

- Internet Explorer 11
- Chrome version 47.0.2526
- Firefox version 43.0.3
- Safari version 9.0.2



Chrome and Firefox use the 'always up to date' model of frequent background updates which regularly increases their version numbers.

Microsoft browsers are excluded from this list as only the versions specified above are supported.



vFire Universal Access Appliance

We support all browsers on Windows 7, 8.1 and 10.

For on-premise installations (non-cloud), you will need the following:

- Windows 2012 R2 Server: The sever needs approximately 5.2 GHz (2vCPU), 8GB RAM per 10 – 20 users. If the appliance is installed in a virtual environment, the VM must have access to the full allocation of resources (vCPU & RAM). It cannot be overcommitted.
- The vFire Application URL (setup in DNS)
- The vUA Appliance URL (setup in DNS pointing to the vUA appliance)
- If SSL certificates are setup on vFire Application server, the name of the certificate needs to be typed into the vUA appliance at install.
- If a test system is required on vUA, it will require a separate appliance to be installed.

vFire Officer and Portal

Microsoft Silverlight is required to run vFire Officer and Portal. Microsoft Silverlight can be downloaded from the **Microsoft Silverlight web page**. There is a list of compatible operating systems and browsers in the **System Requirements** tab. Officer and Portal can be run on all operating systems and browsers which are supported by Microsoft.

Silverlight is supported on the following browsers.

	Internet Explorer	Safari	Firefox	Chrome
PC	Y	N	Y	N
Mac	N	Y	Y	N



Client Prerequisites for Microsoft Office Integration

vFire Core is integrated with a number of Microsoft Office applications such as Word, Excel and Project. The client machine must have Office 2007 or above installed.

- Microsoft Office 2016 is not currently certified against any of our products, and you may encounter problems when using spellcheck and other features.

Local Screen Resolution

Analysts using vFire Core should configure their screen resolution to a minimum screen resolution height of 700 to ensure that users can access the scroll bar in submenus in the new vFire Menu display.

This should not require adjustment of most standard and recommended settings. You are advised to view the menu to determine whether changes are needed before adjusting any settings.



Email Server Requirements

The following email server types are supported by vFire Core.

	9.2.0	9.2.1	9.2.2	9.2.3	9.3	9.4	9.5	9.6	9.7	9.8
Exchange 2010	Y	Y	Y	Y	Y	Y	Y	Y	Y	Y
Exchange 2013	Y	Y	Y	Y	Y	Y	Y	Y	Y	Y
Exchange 365	N	N	N	N	N	Y	Y	Y	Y	Y

Email Protocols

This release supports email protocols of:

Incoming Email: POP3, IMAP and MAPI

Outgoing Email: SMTP, MAPI



Other email servers like Novell GroupWise and IBM Lotus Notes should also work, as long as one of the supported email protocols is used.



Configuring the Server

Before you start

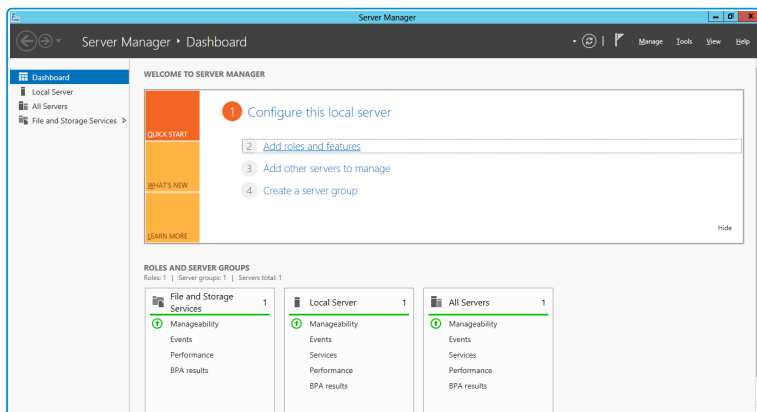
Before doing an installation, check that your server and client machines meet all the prerequisites for web server deployment, database server requirements and client requirements .

If you are using an Oracle database, you need to ensure that you are running Oracle client version 12c or higher before installing vFire Core. To update the dictionary system statistics, you must have Database Account privileges on the GATHER_SYSTEM_STATISTICS role.

To configure the Windows 2012 Server for vFire Core, follow the instructions in this section.

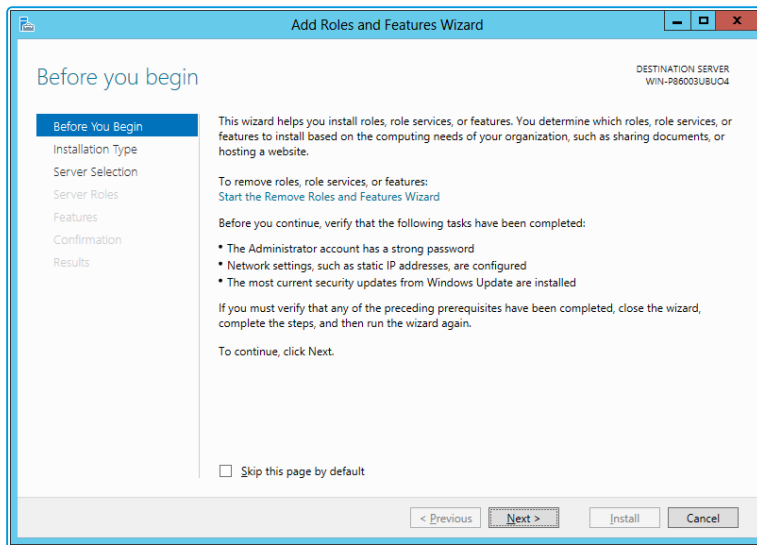
If you are using Windows 2008, you will need to follow the instructions outlined on [Adding ASP.NET to Windows 2008](#).

1. Go to the **Server Manager** application, select **Dashboard**, and select the **Add roles and features** link.

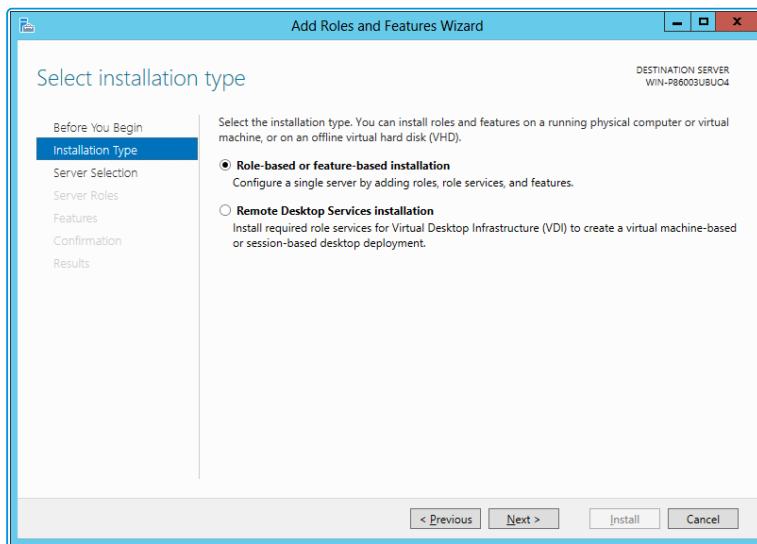




- This will bring up the **Add Roles and Features Wizard** which opens on the **Before You begin** window. Read this page carefully and ensure that you have completed the tasks listed.



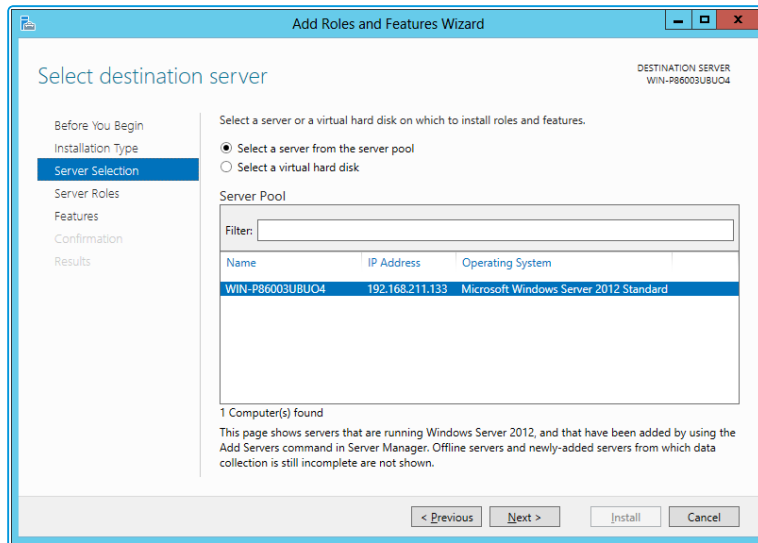
- Select **Next** to continue.
- On the **Select installation type** window, select **Role-based or feature-based installation**.



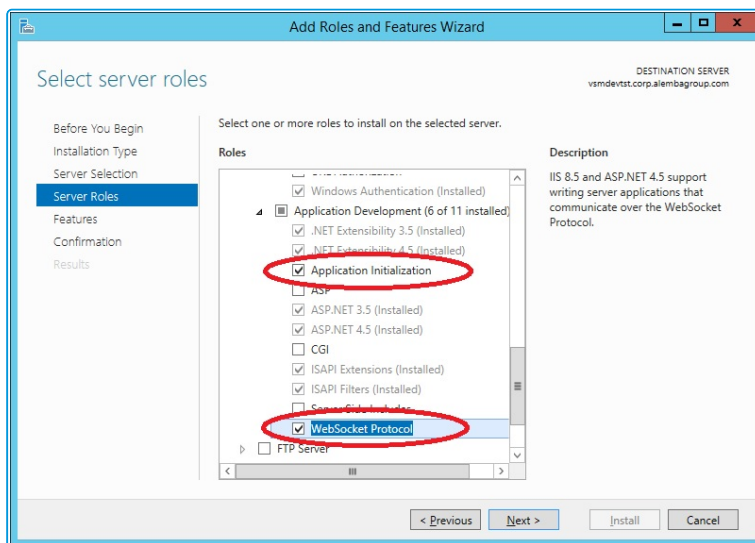
- Select **Next** to continue.



6. On the **Select destination server** window, select the server that you will be using.



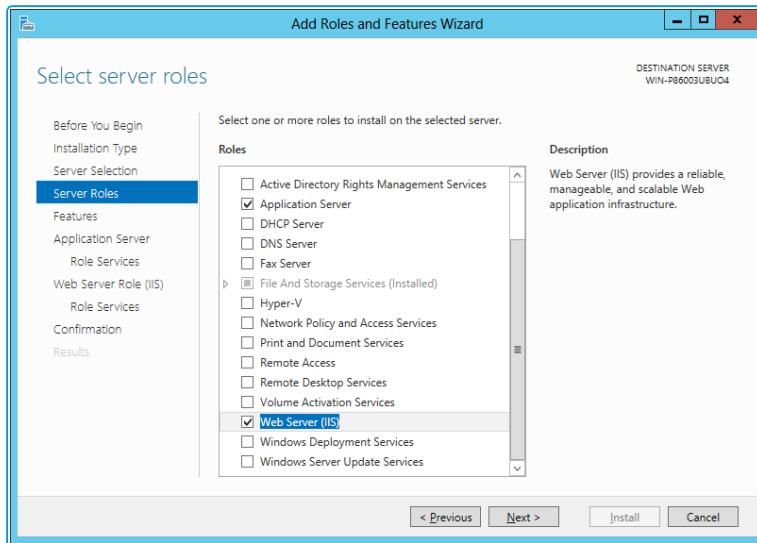
7. Select **Next** to continue.
8. In the **Select server roles** window, the **Description** field on the right side of the window gives you an explanation of the purpose of the different roles. Within **Application Development**, select **Application Initialization** and **WebSocket Protocol**.



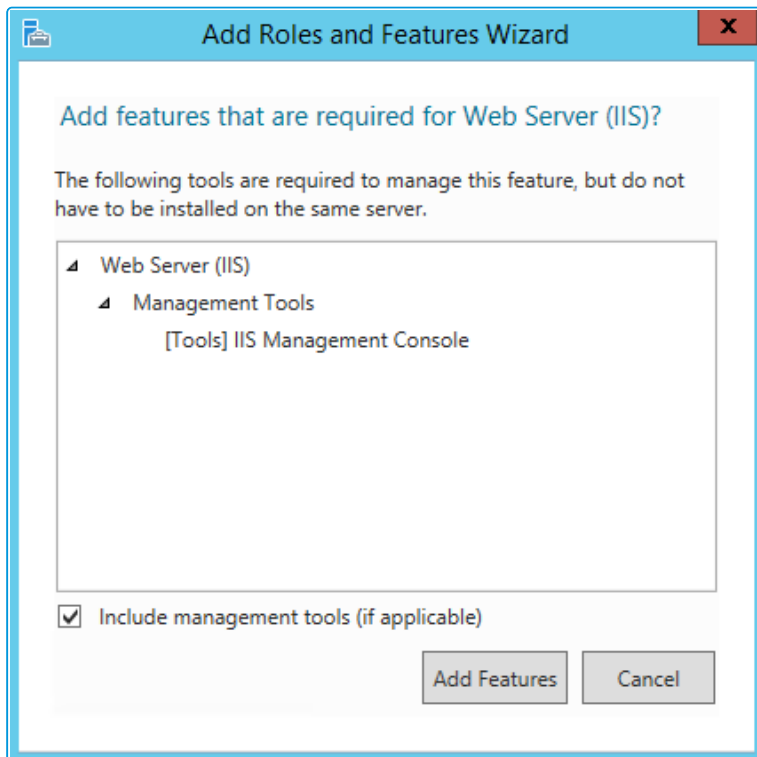
These options will not be available if you are working in Windows 2008.



9. Select **Application Server** and **Web Server (IIS)** as a minimum requirement.



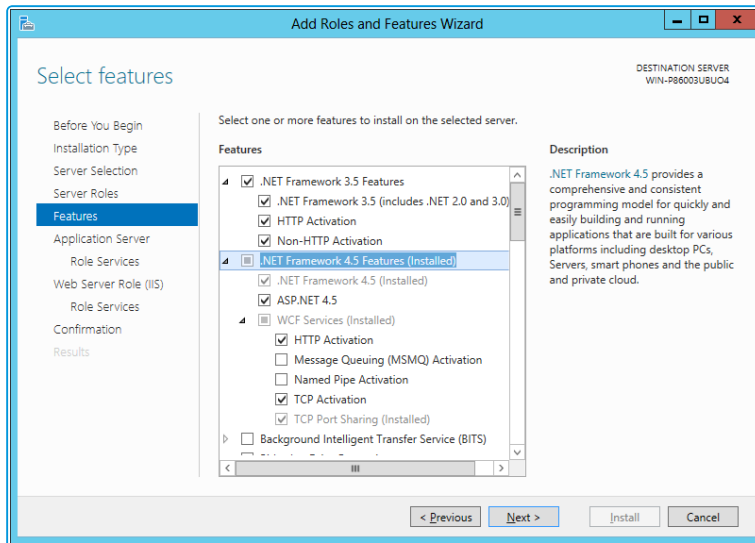
10. When you select **Web Server (IIS)**, the **Add Roles and Features Wizard** window is displayed, prompting you to add management tools.



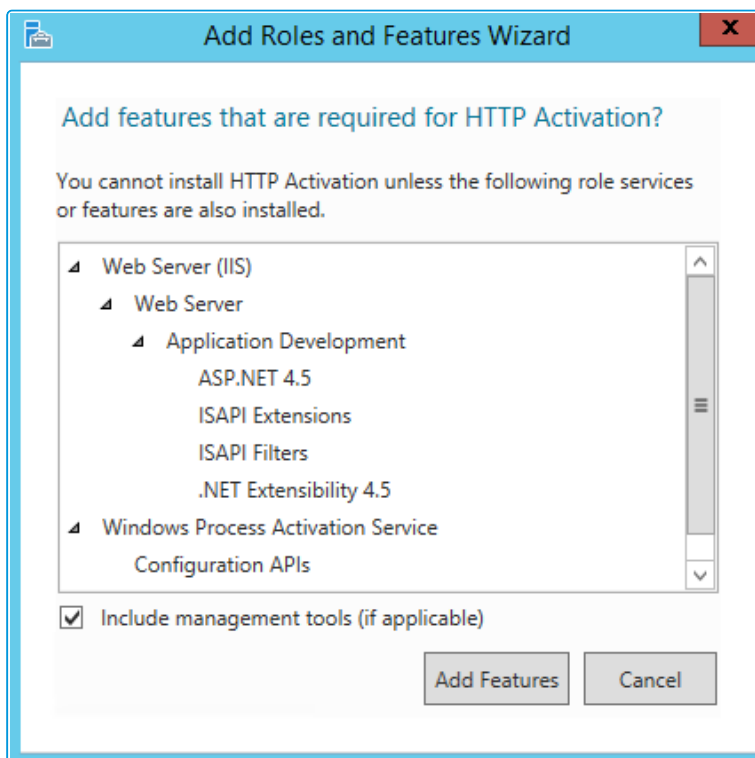
11. Select **Add Features**. The window closes and you are returned to the **Select server roles** window.
12. Select **Next** to continue.



13. In the **Features** window, ensure that the following options are selected.



14. When you select **HTTP Activation** under **.NET Framework**, the **Add Roles and Features Wizard** window is displayed, prompting you to add further features.



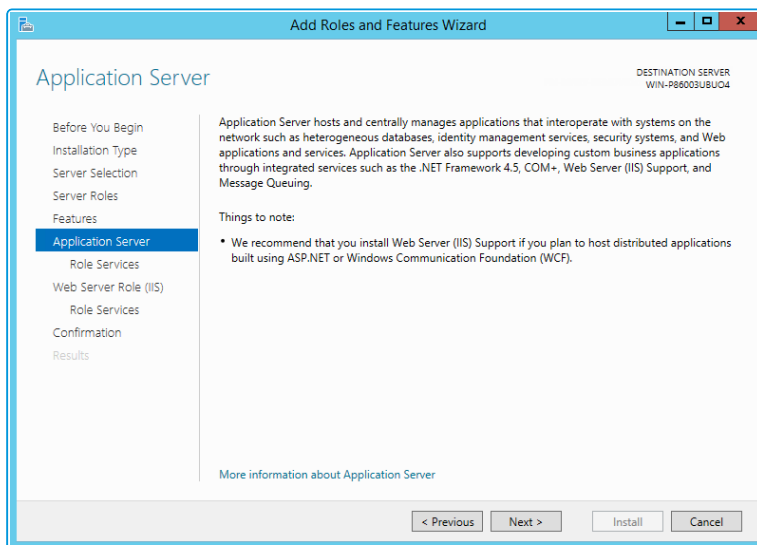
15. Select **Add Features**. The window closes and you are returned to the **Select features** window.



16. Continue adding the features. When you select **HTTP Activation** beneath **WCF Services**, you will see the **Add Roles and Features Wizard** window again. Select **Add Features** to add the required features and return to the Select features window once more.
17. Select **Next** to continue.
18. The **Application Server** window is displayed, giving you information about the application server. Read through the details to ensure you are familiar with them.



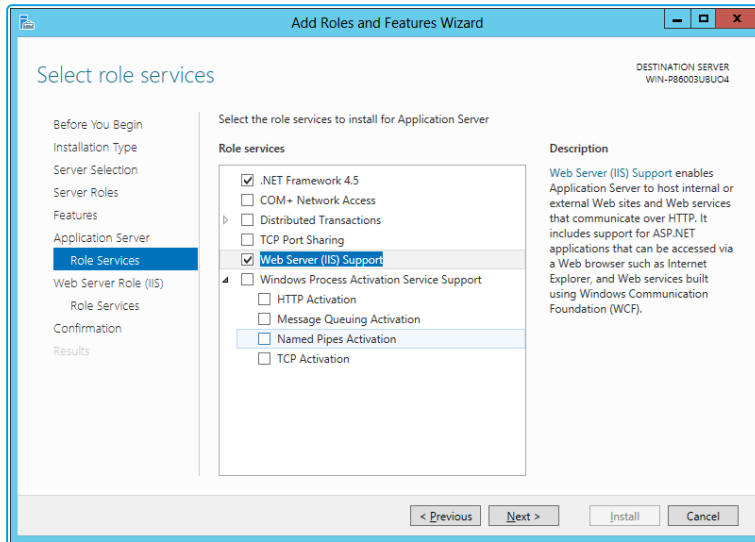
You may not see this window if you are upgrading.



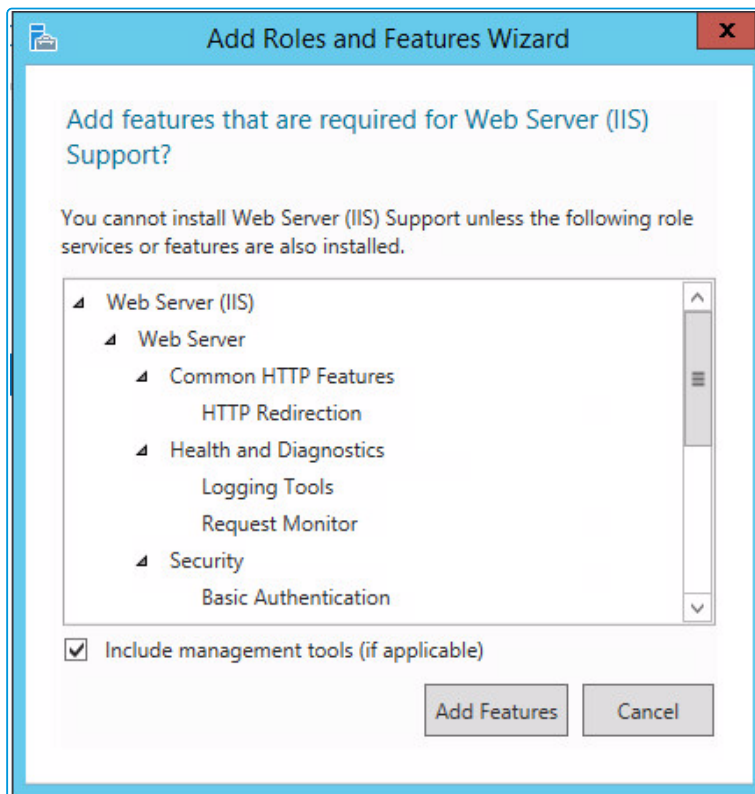
19. Select **Next** to continue.



20. In the **Select role services** window, select the following role services for the application server.



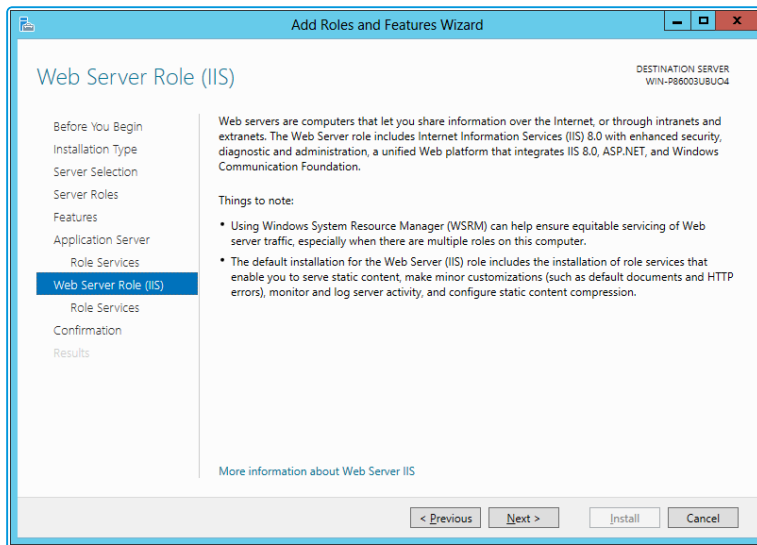
21. When the **Add Roles and Features** window is displayed, add the features.



22. Select **Next** to continue.



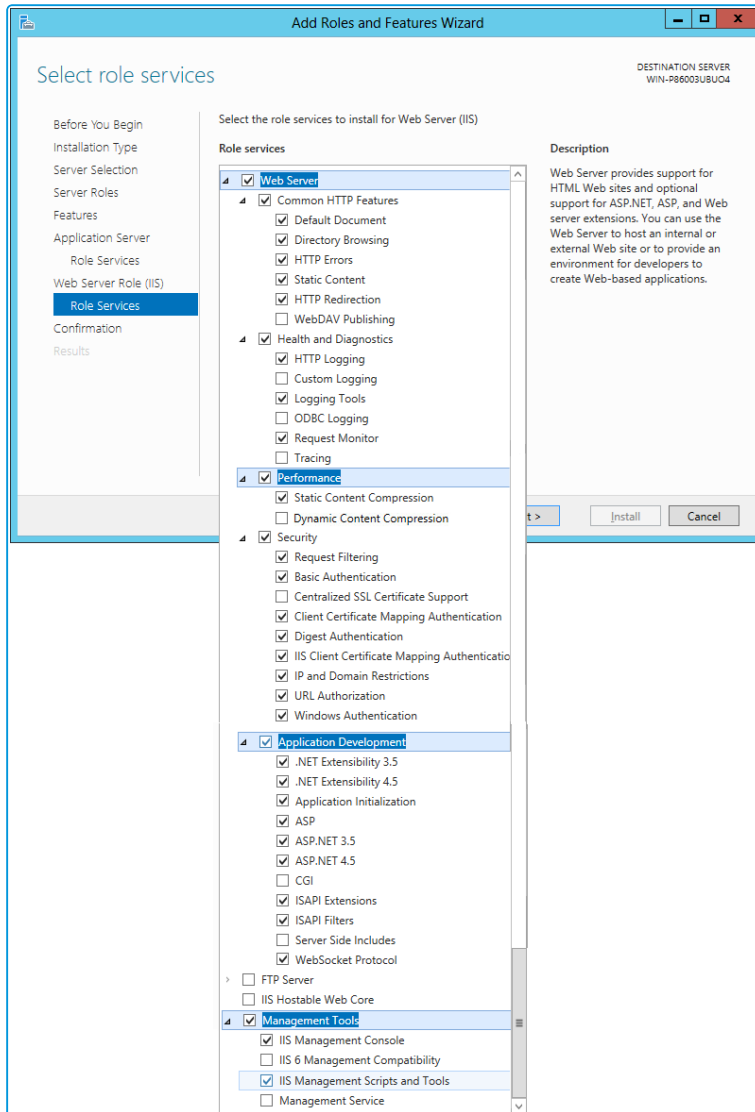
23. In addition to role services for the **Application Server**, you will need to select Role Services for the Web Server Role (IIS). On the **Web Server Role (IIS)** window, read the information provided.




24. Select **Next** to continue.



25. On the **Select role services** window, ensure that all of the roles shown in the following screenshot are ticked.



vFire Core provides its own **Dynamic Content Compression**, which tests indicate performs slightly better than IIS Dynamic Content Compression. Disabling IIS Dynamic Content Compression is a viable option but not required.  Dynamic Content Compression is automatically enabled in IIS. When disabled, the Web Server (IIS) Support Role is also disabled, therefore, it is recommended you review the Role Services enabled by the Web Server (IIS) Support Role and manually re-enable those required for your environment.

26. Select **Next** to continue.



27. In the **Confirm installation selections** window, confirm that you have the following selected. Scroll down to see the details.

Add Roles and Features Wizard

Confirm installation selections

DESTINATION SERVER
pm-mary-demo-0.corp.alembagroup.com

Before You Begin
Installation Type
Server Selection
Server Roles
Features
Application Server
Role Services
Web Server Role (IIS)
Role Services
Confirmation
Results

To install the following roles, role services, or features on selected server, click Install.

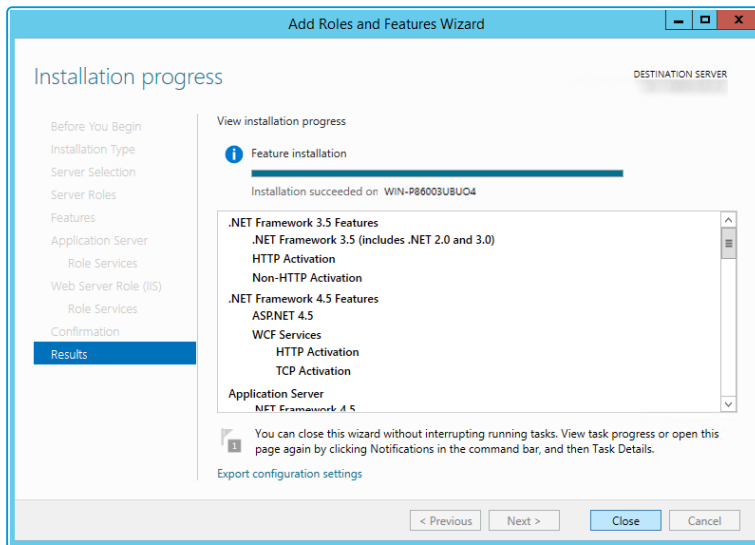
Restart the destination server automatically if required

Optional features (such as administration tools) might be displayed on this page because they have been selected automatically. If you do not want to install these optional features, click Previous to clear their check boxes.

- .NET Framework 3.5 Features
 - .NET Framework 3.5 (includes .NET 2.0 and 3.0)
 - HTTP Activation
 - Non-HTTP Activation
- .NET Framework 4.5 Features
 - ASP.NET 4.5
 - WCF Services
 - HTTP Activation
 - TCP Activation
- Application Server
 - .NET Framework 4.5
 - Web Server (IIS) Support
- Web Server (IIS)
 - Management Tools
 - IIS Management Console
 - IIS Management Scripts and Tools
 - Web Server
 - Application Development
 - WebSocket Protocol
 - Application Initialization
 - .NET Extensibility 4.5
 - ISAPI Extensions
 - ISAPI Filters
 - ASP.NET 4.5
 - Common HTTP Features
 - Default Document
 - Directory Browsing
 - HTTP Errors
 - HTTP Redirection
 - Static Content
 - Health and Diagnostics
 - HTTP Logging
 - Logging Tools
 - Request Monitor
 - Performance
 - Static Content Compression
 - Security
 - Basic Authentication
 - IIS Client Certificate Mapping Authentication
 - Client Certificate Mapping Authentication
 - Digest Authentication
 - Request Filtering
 - IP and Domain Restrictions
 - URL Authorization
 - Windows Authentication
- Windows Process Activation Service
 - Configuration APIs
 - .NET Environment 3.5
 - Process Model



28. Select **Install** when you are ready to proceed. When installation is complete, the results window will display all roles, role services and features which have been installed.



29. Select **Close** to close the wizard. The configuration is complete.



User Directory Servers

The following directory servers are supported by vFire Core.

Directory Server	Version
Microsoft Active Directory	2008
Microsoft Active Directory	2012
Novell eDirectory	8
Sun Java System Directory	5



vFire Officer App Prerequisites

Ensure that your system meets the following prerequisites before configuring your environment for the vFire Officer app.

- You need to be using vFire Core 9.2.2 or above (server version)
- Your mobile device must be able to navigate to the vFire HTML pages delivered via IIS web services. This may require you to configure your firewall.
- You must have a valid vFire login account, and be flagged as an Analyst.
 - If Directory authentication is used, you may need to configure a second basic authentication system.
 - Microsoft Active Directory or Novell eDirectory authentication are excluded from V1.0.0 of this mobile app.
- You must know your system name and URL to configure the settings when you first use the app. Your system administrator will provide these.

Specific Versions

The app is supported on the following iOS and Android mobile operating systems:

- Windows Phone 8.1
- iOS versions 7 or higher
- Android versions 4.3 or higher

It has been tested on the following devices. (Other devices are also supported.)

- iPhone 5
- iPhone 6
- Samsung Galaxy S3
- Sony Xperia Z3
- HTC One



vFire App Prerequisites

The **vFire** app is designed for users to view their calls, approvals, order and assets. Before users can install the vFire app on their mobile devices, you need to ensure that your system meets the prerequisites.

Ensure that your system meets the following prerequisites before configuring your environment for the vFire app.

The app is supported on android, windows and iOS phones from 9.8.1.

- You need to be using vFire Core 9.7.0 or above to run the app on a windows phone, or 9.8.0 or above (server version) to run it on an android/iOS phone.
- Your mobile device must be able to navigate to the vFire HTML pages delivered via IIS web services. This may require you to configure your firewall.
- You must have a valid vFire login account, and be flagged as a User.
 - If Directory authentication is used, you may need to configure a second basic authentication system.
 - Microsoft Active Directory or Novell eDirectory authentication are excluded from this version of the app.
- You must know your system name and URL to configure the settings when you first use the app. Your system administrator will provide these.

To use the app on a Windows phone:

- You need to be using vFire Core 9.7.0 or above (server version)
- The app is currently available on Windows 8.1 phones

To use the app on an android/iOS phone:

- You need to be using vFire Core 9.8.0 or above (server version)
- The app is currently available on iOS version 10.3.1; and Android version 6.0.1 phones
- or higher

The app is run using the Alemba API, which is installed by default when you install/upgrade to 9.7 or above. However, if this is actively disabled by your system administrator, you cannot run the app.

It has been tested on the following devices. (Other devices are also supported.)



- Windows 8.1 Phone – Nokia Lumia 630 running Windows Phone 8.1 Update
- iPhone 6+ running iOS 10.3.1
- Samsung Galaxy S5 running Android version 6.0.1



Further Information

Product Information and Online Support

For information about Alemba products, licensing and services, visit www.alemba.com.

For release notes and software updates, go to www.alemba.help.

Up-to-date product documentation, training materials and videos can be found at www.alemba.help/help.



You may need to register to access some of these details.

Technical Support

For technical support, please visit: www.alemba.com and select the **vfire support** link. You will need to log in to the alemba self service portal to contact the Alemba Service Desk.

Comments and Feedback

If you have any comments or feedback on this documentation, submit it to info@alembagroup.com.