



vFire 9.9

Prerequisites Guide

Version 1.1

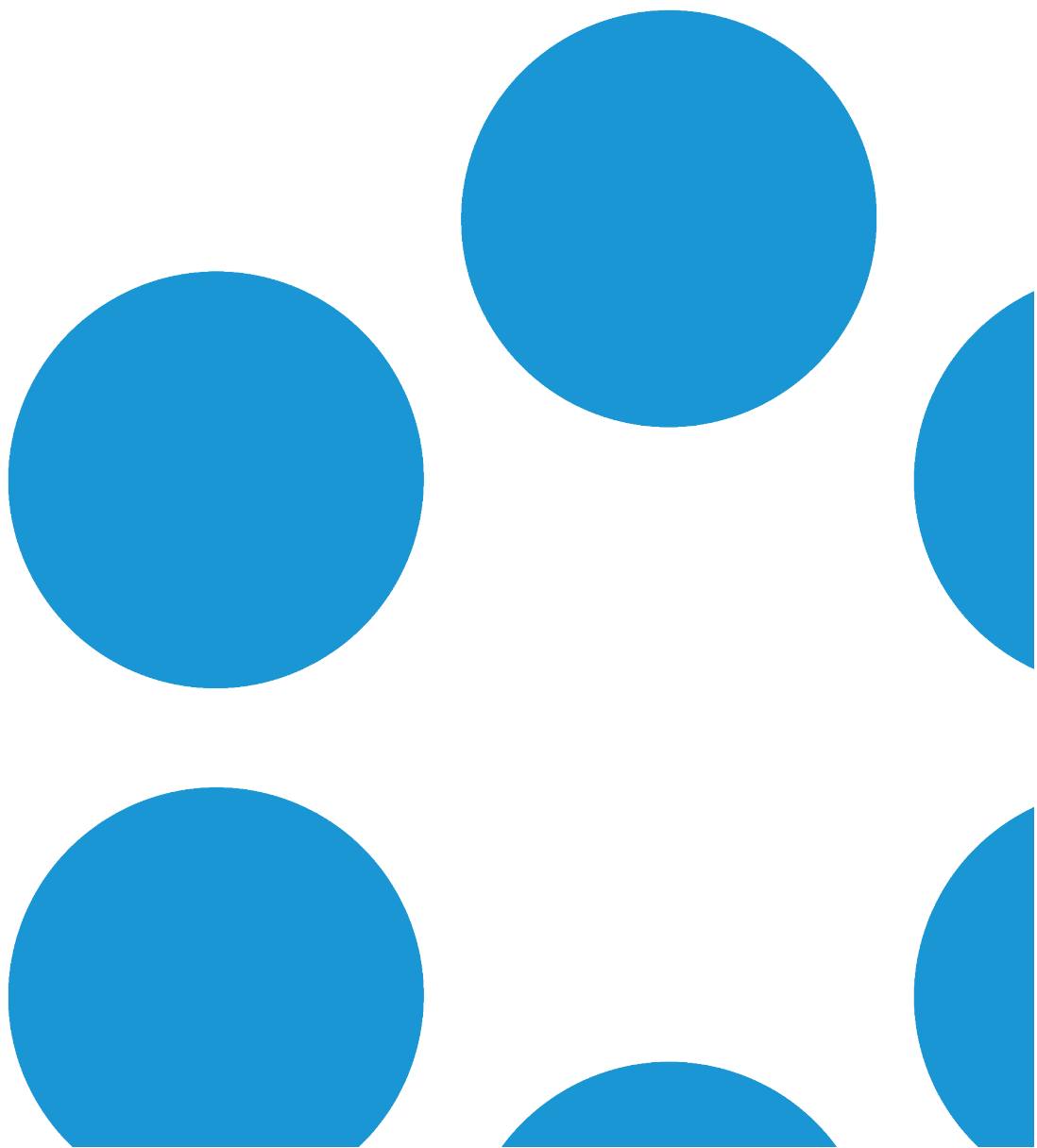




Table of Contents

Version Details	4
Copyright	4
About this Guide	5
Intended Audience	5
Standards and Conventions	5
Introduction	6
Web Server Requirements	7
Hardware Requirements	7
Operating System Requirements	8
Running vFire on Virtualized Servers	8
PowerShell Requirements	9
Additional Requirements	9
Web Server FAQs	10
Database Server Requirements	11
Hardware Requirements	11
Database Engine Requirements	12
Database Account Requirements	13
Network Location	13
Client Requirements	14
vFire Core	14



vFire Self Service	15
Minimum Supported Browser Versions	15
vFire Universal Access Appliance	16
vFire Officer and Portal	16
Client Prerequisites for Microsoft Office Integration	17
Local Screen Resolution	17
Email Server Requirements	18
Configuring the Server	19
What's Next	28
User Directory Servers	29
vFire Officer App Prerequisites	30
Further Information	31
Product Information and Online Support	31
Technical Support	31
Comments and Feedback	31



Version Details

This guide supports the version of the product listed, and supports all subsequent versions until the document is replaced by a new edition. The table below contains version details for the guide.

Version Number	Date	Details
1.0	10 August 2017	<p>This version of the Prerequisites Guide documents the prerequisites for version 9.9.0 of vFire Core and vFire Officer & Portal. It contains the following updates to the prerequisites for earlier software releases:</p> <ul style="list-style-type: none"> This version of the software does not support Oracle. If you are running an Oracle installation, you should not upgrade higher than 9.8. References to Oracle have been removed throughout the document.
1.1	28 September 2017	<p>In this version of the Prerequisites, we have added a checklist at the end of the document, which you can use to ensure that you have covered the main prerequisites and steps required for a successful installation.</p> <p>We have also further clarified the Database Account requirements. See page 13 for more details.</p> <p>To log calls using the vFire app on an iOS phone, you must be running iOS 11. See vFire App Prerequisites for more details.</p>


Copyright

Copyright © Alemba Limited (or its licensors, including ©2010 - 2017 VMware, Inc). All rights reserved. This product is protected by U.S. and international copyright and intellectual property laws. VMware products are covered by one or more patents listed at: <http://www.vmware.com/go/patents>. VMware is a registered trademark or trademark of VMware, Inc. in the United States and/or other jurisdictions. VMware Service Manager™ is also trademark of VMware, Inc. Alemba™, vFire™ and vFireCore™ are trademarks of Alemba Limited (vFire Core™ is developed by Alemba Limited from VMware, Inc's product "VMware Service Manager", under licence from VMware, Inc). All other marks and names mentioned herein may be trademarks of their respective companies.



About this Guide

This guide describes the software and hardware requirements for the current version of vFire, vFire Self Service and the vFire apps.




 This version of the guide contains instruction for the latest version of the vFire software. If you are running an earlier version of vFire please refer to alemba.help.

Intended Audience

This guide is written for system administrators responsible for installing vFire, vFire Self Service, and the vFire apps.

Standards and Conventions

The following standards and conventions are used throughout the guide:

	Prerequisites, including security rights and access you may need prior to completing the task. Prerequisites are also highlighted in a shaded box.
	Information related to the current topic that may be of particular interest/significance. Notes are also highlighted in a shaded box.
	Warnings. These are also highlighted in a shaded box.
Field name	Fields are highlighted in bold text.



Introduction

This document describes the requirements for the current version of vFire Core, vFire Officer & Portal, and the vFire app software, and should be read prior to installation to ensure that your hardware, server and client requirements are met.

Minimum recommended specifications are given for each requirement. In some instances, such as Hardware CPU and memory, you can use a higher spec than the minimum recommended in order to increase your system's performance.

If you have any further questions regarding prerequisites, please contact the Alemba Service Desk.



Web Server Requirements

This section details the hardware and operating system requirements for running the Web Server component of vFire Core (that is, the main application). Multiple web servers can be configured under a load-balancer; contact Alemba Support for consultation on the best configuration for individual requirements.

We recommend that you install the database on a separate dedicated server.

Hardware Requirements

vFire Core requires a x64 Windows server. The minimum web server hardware requirements for vFire Core are listed below.



This is the recommended **minimum**. If your site has a large volume of data, you should consider using hardware with a higher specification.

Hardware	Minimum Requirement	Recommended Requirement
CPU	2 CPU Cores	4 CPU Cores
Memory	1 GB RAM	4GB
HD	1GB of available space (+500MB per system)	2GB (+1GB per system)



Operating System Requirements

Below are the minimum requirements for the operating system.

Operating System	IIS Version	Hardware	Additional Requirements
Windows Server 2008 R2 (64-bit)	IIS 7.5	x64	.NET 4.5.2;
Windows Server 2012	IIS 8.0		MMC 3.0 or above;
Windows Server 2012 R2	IIS 8.5		PowerShell 5.



Upgrading Windows Server 2008 to Windows Server 2012 is not a supported Server upgrade path. We recommend that you always create a new machine for a change in the operating system of a server rather than upgrading.

Running vFire on Virtualized Servers

Virtual machines are supported when the guest operating system is supported by vFire Core and the virtual machine vendor. As a minimum, you should have 2 CPUs and 16GB of RAM on your virtual machine. Ensure that the CPUs are not over committed.



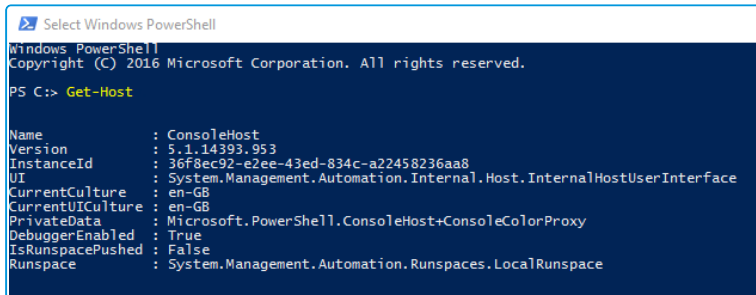
Your virtual directory must be configured correctly to ensure smooth upgrade of .NET to 4.5.2. See the **Installation and Upgrade Guide** for more details.



PowerShell Requirements

You must be running PowerShell 5.0 or above on the web server.

If PowerShell is already installed on your server, you can identify which version you are running by starting a PowerShell session (key **PowerShell** into your search bar and select the app), and then typing **Get-Host** at the command prompt. The version number will be displayed along with the rest of the app information.



```
Select Windows PowerShell
Windows PowerShell
Copyright (C) 2016 Microsoft Corporation. All rights reserved.

PS C:\> Get-Host

Name       : ConsoleHost
Version    : 5.1.14393.953
InstanceId : 36f8ec92-e2ee-43ed-834c-a22458236aa8
UI         : System.Management.Automation.Internal.Host.InternalHostUserInterface
CurrentCulture   : en-GB
CurrentUICulture : en-GB
PrivateData     : Microsoft.PowerShell.ConsoleHost+ConsoleColorProxy
DebuggerEnabled : True
IsRunspacePushed : False
Runspace       : System.Management.Automation.Runspaces.LocalRunspace
```

To upgrade to, or install version 5, you will need to install the Windows Management Framework (WMF) 5.0 or higher. You can identify and download the package you require for your OS platform here - <https://msdn.microsoft.com/en-us/powershell/wmf/5.0/requirements>.

Additional Requirements

The web server must include Internet Explorer 11 or above.



Although this version of Internet Explorer is not supported by Microsoft for Windows Server 2012, it can be downloaded and installed with only limited impairments to functionality.

Install all language packs associated with the non-English characters used by Analysts at sites that use Unicode databases. This enables the indexing service on the web server to perform indexing correctly.



Web Server FAQs

? What are the web server prerequisites for setting up production and test environments for vFire Core?

You should install the production environment on its own web server or virtual machine and install the test environment on other servers. When testing an upgrade of vFire Core, a separate test environment will ensure the integrity of any customizations that have been applied in the production environment.

? What are the web server prerequisites for vFire Core to support POP3/IMAP/SMTP over SSL?

The web server should be able to communicate with the POP3/IMAP/SMTP server.

? How should the web server be optimized?

Alemba recommends optimizing the web server for background service performance.



Database Server Requirements

This section details the requirements for running the database component of the current release of vFire Core.



We recommend that you install vFire Core on a separate server to the database server.





Hardware Requirements


Your database vendor's documentation should provide the minimum recommended hardware configuration required for the database version you intend to deploy.



Database Engine Requirements

vFire Core supports the following database engines.

	9.2.0	9.2.1	9.2.2	9.2.3	9.3	9.4	9.5	9.6	9.7	9.8	9.9
SQL Server 2008 SP1 , 2008 R2 (32 or 64 bit)  See SQL Server Requirements in the online help below.	Y	Y	Y	Y	Y	Y	Y	Y	Y*	Y*	Y*
SQL Server 2012 (64 bit)  See SQL Server Requirements in the online help below.	Y	Y	Y	Y	Y	Y	Y	Y	Y	Y	Y
SQL Server 2014 (64 bit)  See SQL Server Requirements in the online help below.	Y	Y	Y	Y	Y	Y	Y	Y	Y	Y	Y
SQL Server 2016 (64 bit)  See SQL Server Requirements in the online help below.	N	N	N	N	N	N	Y	Y	Y	Y	Y

 * SQL Server 2008 is not supported if you are using the Alemba API.

SQL Server Requirements

SQL Server 2008 requires **Full-Text Search** to be enabled in the Feature Selection section.



SQL Server 2012, 2014 and 2016 and above require the **Full-Text and Semantic Extractions for Search** feature to be enabled.

vFire Core does not support SQL Server Express editions.

Database Account Requirements

The database login account that is used for vFire during normal system operation and system upgrades must:

- be a member of the **db_owner** group
- be granted VIEW DATABASE STATE permission for the vFire database
- have VIEW SERVER STATE permission on the database server
- Have DB_DATAREADER permission on the master database

These permissions are required for smooth running of the system. The Alemba API needs to read dm_db_index_usage_stats in order to sync data.

Network Location

The network location of the database server to the vFire Core server will have an impact on performance. Network switching and firewall configurations need to be considered in the design of the system.



Client Requirements

This section details the client requirements for the current release of vFire Core.

vFire Core

The current release of vFire Core is supported on Microsoft Windows clients with the following browser and operating system combinations.

Internet Explorer 32-bit and 64-bit browsers are supported. By default, vFire Core runs in 32-bit mode in Internet Explorer. The 64-bit client is available as a separate installer, but is not automatically deployed.

	Windows Vista	Windows 7	Windows 8.1	Windows 10
Internet Explorer 9	Y*	N	N	N
Internet Explorer 11	N	Y	Y	Y

* Microsoft documents that extended support for Vista ends in April 2017.

We advise that you ensure that you have installed all critical browser updates to ensure smooth operating.

• You must use Internet Explorer 11 version 11.0.9600.17031 or higher to run Nano without errors.

• Designer is not compatible with Vista and Internet Explorer 9. A known limitation with vFire Core and Vista/IE9 prevents screens rendering correctly in Designer.

ActiveX Support

The current release of vFire Core client requires permission to download and execute signed ActiveX controls. If this is not feasible, you can install the ActiveX controls using the available MSI package.

You need to configure browser settings for vFire Core (internet and intranet) to download ActiveX controls. Follow these steps.



1. In Internet Explorer, go to the **Tools** menu and select **Internet Options**.
2. In the **Security** tab, highlight the **Internet** or **Local Intranet** security level icons, depending on where the web server is located.
3. Click on the **Custom Level** button. The **Security Settings** window is displayed.
4. Select the option to enable or prompt for **Download Signed ActiveX controls**.



vFire Core signs its controls so that they are regarded as trusted controls. This should not affect the majority of sites, as most people will not have modified their default settings.

vFire Self Service

The current release of vFire Self Service is supported on the following browser and operating system combinations.

	Windows Vista	Windows 7	Windows 8.1	Windows 10	Mac
Internet Explorer 9	Y	N	N	N	N
Internet Explorer 11	N	Y	Y	Y	N
Windows Edge	N	N	N	Y	N
Firefox	Y	Y	Y	Y	Y
Chrome	Y	Y	Y	Y	Y
Safari	N	N	N	N	Y

Minimum Supported Browser Versions

This list describes the minimum supported browser versions for the vFire Self Service portal. All versions above the ones listed are supported.

- Internet Explorer 9 (as per table above)
- Chrome version 47.0.2526
- Firefox version 43.0.3
- Safari version 9.0.2



Chrome and Firefox use the 'always up to date' model of frequent background



updates which regularly increases their version numbers.

Microsoft browsers are excluded from this list as only the versions specified above are supported.

vFire Universal Access Appliance

We support all browsers on Windows 7, 8.1 and 10.

For on-premise installations (non-cloud), you will need the following:

- Windows 2012 R2 Server: The server needs approximately 5.2 GHz (2vCPU), 8GB RAM per 10 – 20 users. If the appliance is installed in a virtual environment, the VM must have access to the full allocation of resources (vCPU & RAM). It cannot be overcommitted.
- The vFire Application URL (setup in DNS)
- The vUA appliance URL (setup in DNS pointing to the vUA appliance)
- If SSL certificates are setup on the vFire Application server, the name of the certificate needs to be typed into the vUA appliance at install.
- If a test system is required on the vUA appliance, it will require a separate appliance to be installed.

vFire Officer and Portal

Microsoft Silverlight is required to run vFire Officer and Portal. Microsoft Silverlight can be downloaded from the [Microsoft Silverlight web page](#). There is a list of compatible operating systems and browsers in the **System Requirements** tab. Officer and Portal can be run on all operating systems and browsers which are supported by Microsoft.

Silverlight is supported on the following browsers.

	Internet Explorer	Safari	Firefox	Chrome
PC	Y	N	Y	N
Mac	N	Y	Y	N



Client Prerequisites for Microsoft Office Integration

vFire Core is integrated with a number of Microsoft Office applications such as Word, Excel and Project. The client machine must have Office 2007 or above installed.

- Microsoft Office 2016 is not currently certified against any of our products, and you may encounter problems when using spellcheck and other features.

Local Screen Resolution

Analysts using vFire Core should configure their screen resolution to a minimum screen resolution height of 700 to ensure that users can access the scroll bar in submenus in the new vFire Menu display.

This should not require adjustment of most standard and recommended settings. You are advised to view the menu to determine whether changes are needed before adjusting any settings.



Email Server Requirements

The following email server types are supported by vFire Core.

	9.2.0	9.2.1	9.2.2	9.2.3	9.3	9.4	9.5	9.6	9.7	9.8	9.9
Exchange 2010	Y	Y	Y	Y	Y	Y	Y	Y	Y	Y	Y
Exchange 2013	Y	Y	Y	Y	Y	Y	Y	Y	Y	Y	Y
Exchange 365	N	N	N	N	N	Y	Y	Y	Y	Y	Y

Email Protocols

This release supports email protocols of:

Incoming Email: POP3, IMAP and MAPI

Outgoing Email: SMTP, MAPI




Other email servers like Novell GroupWise and IBM Lotus Notes should also work, as long as one of the supported email protocols is used.



Configuring the Server

Before you start

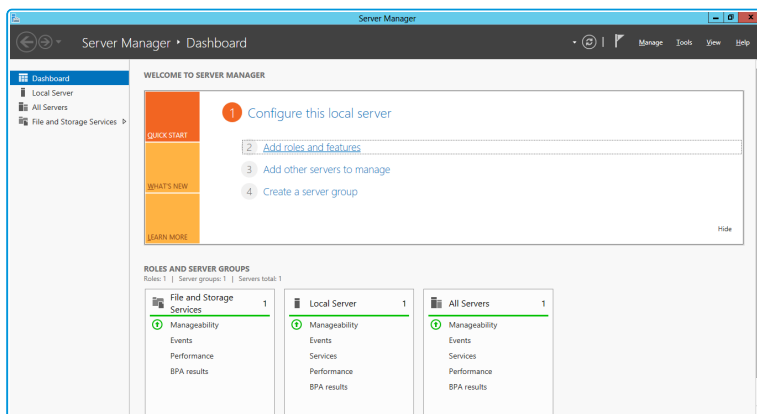
Before doing an installation, check that your server and client machines meet all the prerequisites for web server deployment, database server requirements and client requirements .

 Oracle databases are not supported for vFire 9.9 and above.

To configure the Windows 2012 Server for vFire Core, follow the instructions in this section.

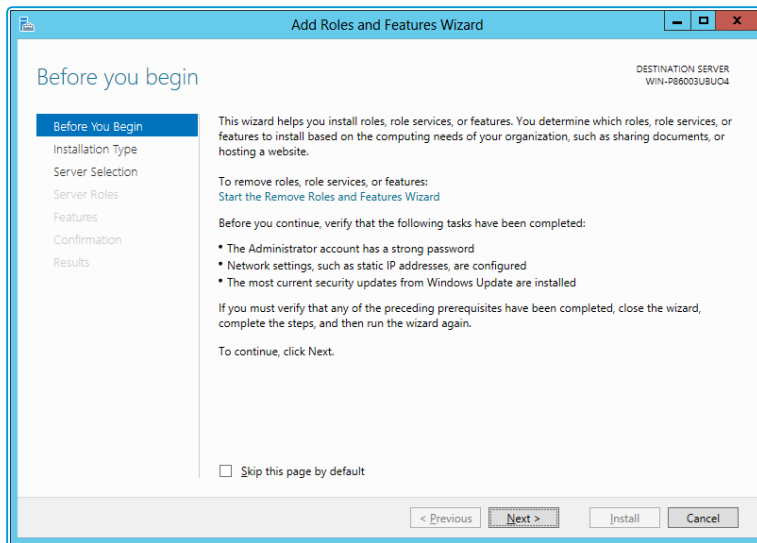
If you are using Windows 2008, you will need to follow the instructions outlined in the documentation on **Adding ASP.NET to Windows 2008** in the Install/Upgrade documentation.

1. Go to the **Server Manager** application, select **Dashboard**, and select the **Add roles and features** link.

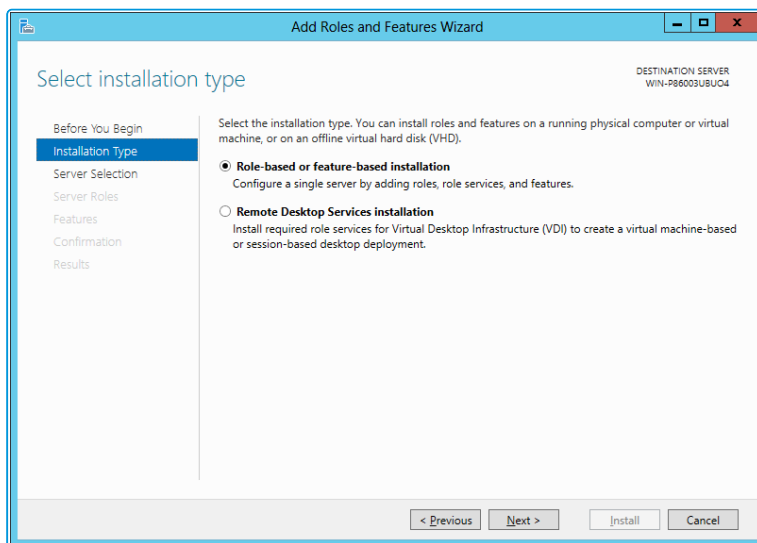




- This will bring up the **Add Roles and Features Wizard** which opens on the **Before You begin** window. Read this page carefully and ensure that you have completed the tasks listed.



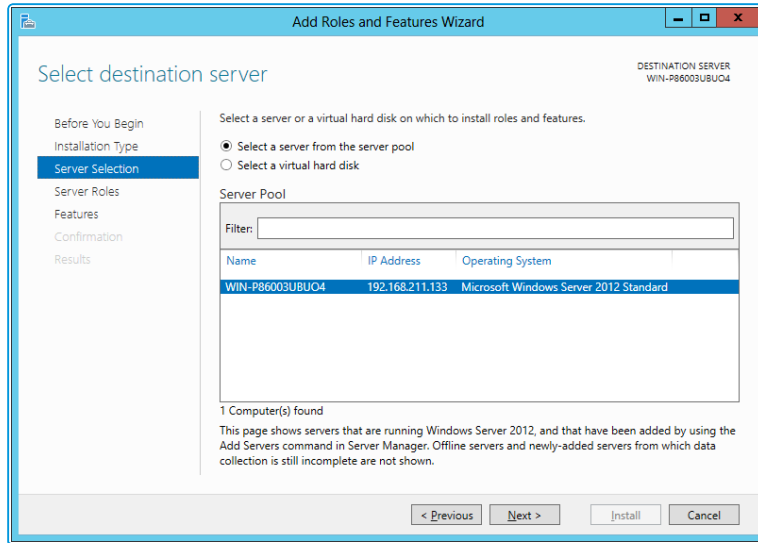
- Select **Next** to continue.
- On the **Select installation type** window, select **Role-based or feature-based installation**.



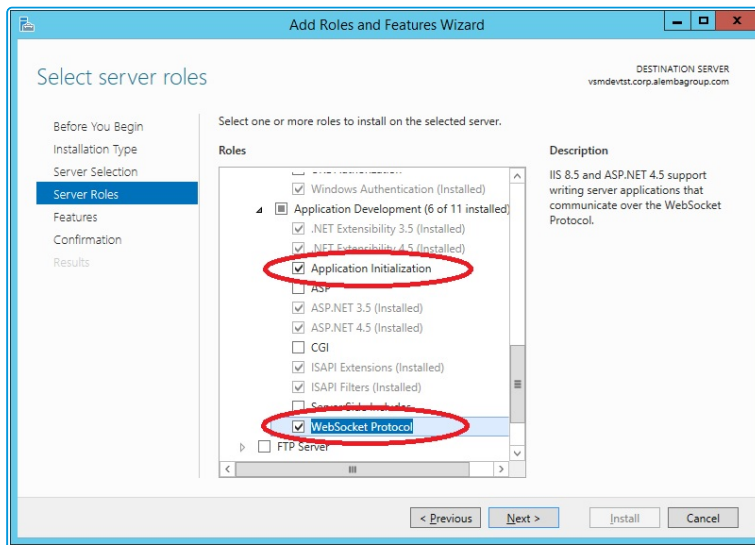
- Select **Next** to continue.



- On the **Select destination server** window, select the server that you will be using.



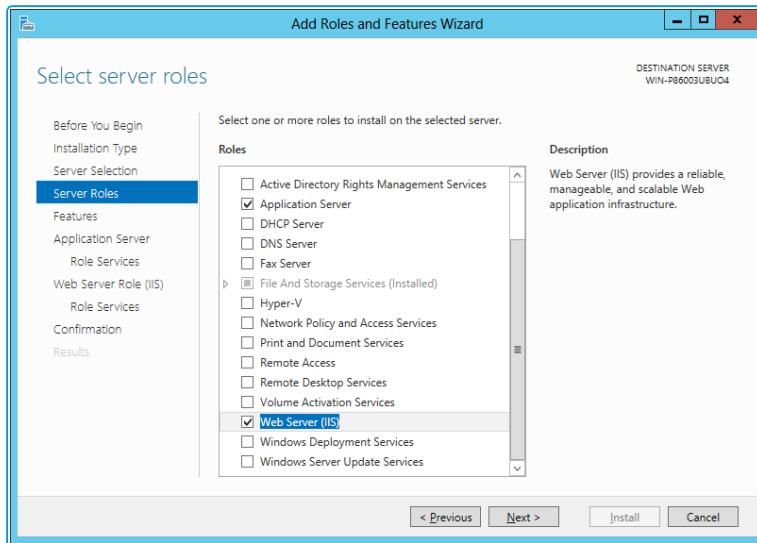
- Select **Next** to continue.
- In the **Select server roles** window, the **Description** field on the right side of the window gives you an explanation of the purpose of the different roles. Within **Application Development**, select **Application Initialization** and **WebSocket Protocol**.



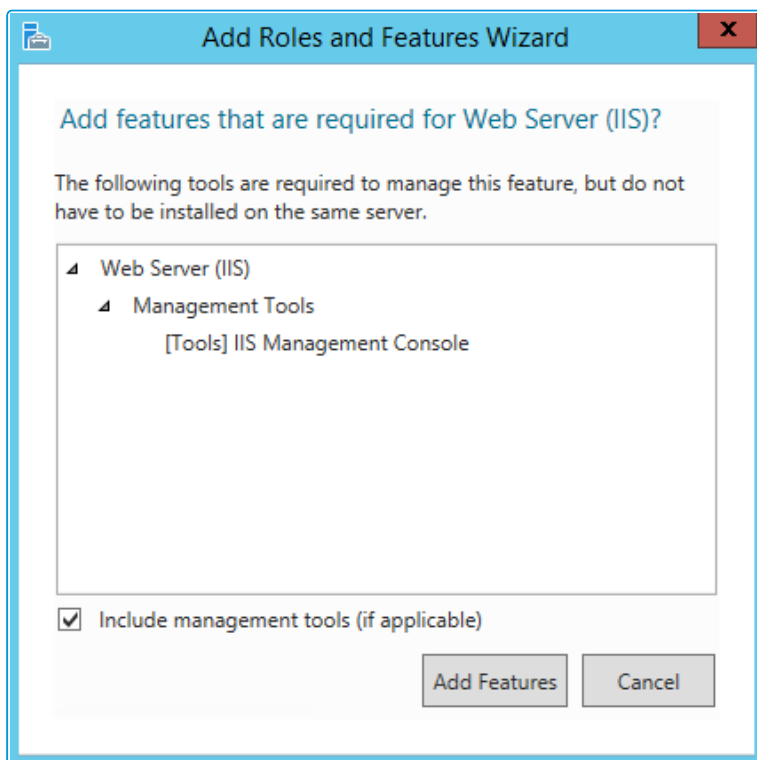
These options will not be available if you are working in Windows 2008.



9. Select **Application Server** and **Web Server (IIS)** as a minimum requirement.



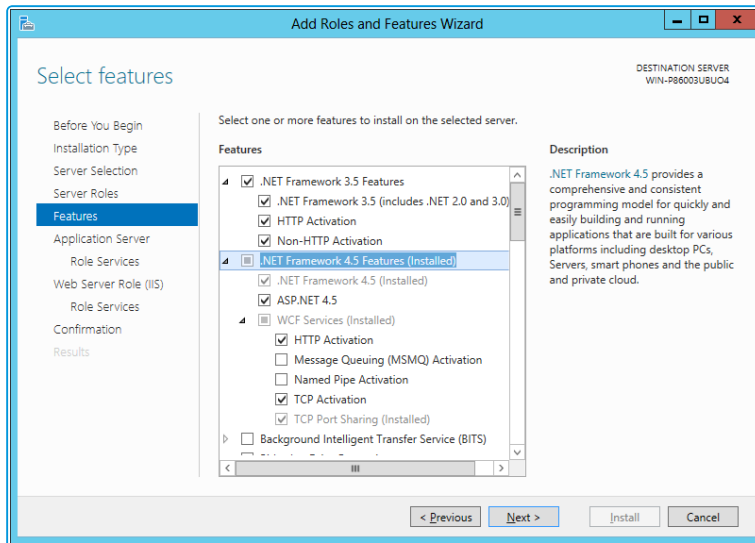
10. When you select **Web Server (IIS)**, the **Add Roles and Features Wizard** window is displayed, prompting you to add management tools.



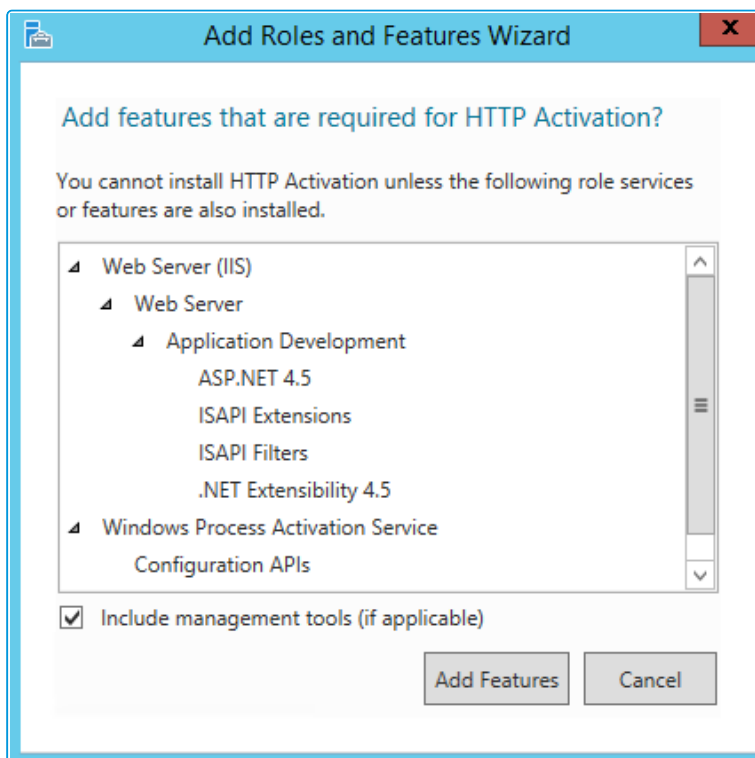
11. Select **Add Features**. The window closes and you are returned to the **Select server roles** window.
12. Select **Next** to continue.



13. In the **Features** window, ensure that the following options are selected.



14. When you select **HTTP Activation** under **.NET Framework**, the **Add Roles and Features Wizard** window is displayed, prompting you to add further features.



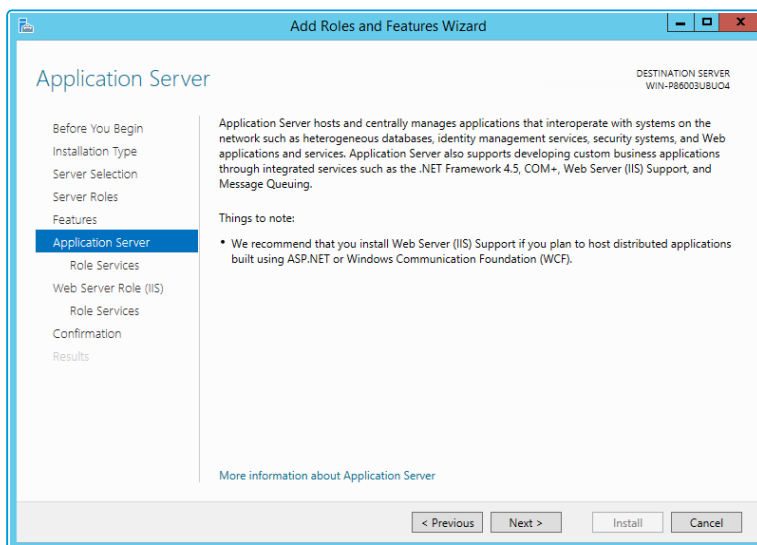
15. Select **Add Features**. The window closes and you are returned to the **Select features** window.



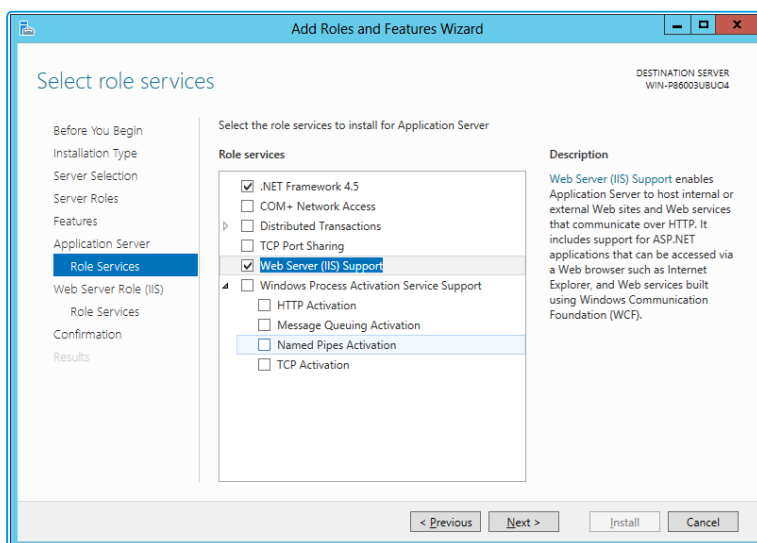
16. Continue adding the features. When you select **HTTP Activation** beneath **WCF Services**, you will see the **Add Roles and Features Wizard** window again. Select **Add Features** to add the required features and return to the Select features window once more.
17. Select **Next** to continue.
18. The **Application Server** window is displayed, giving you information about the application server. Read through the details to ensure you are familiar with them.



You may not see this window if you are upgrading.

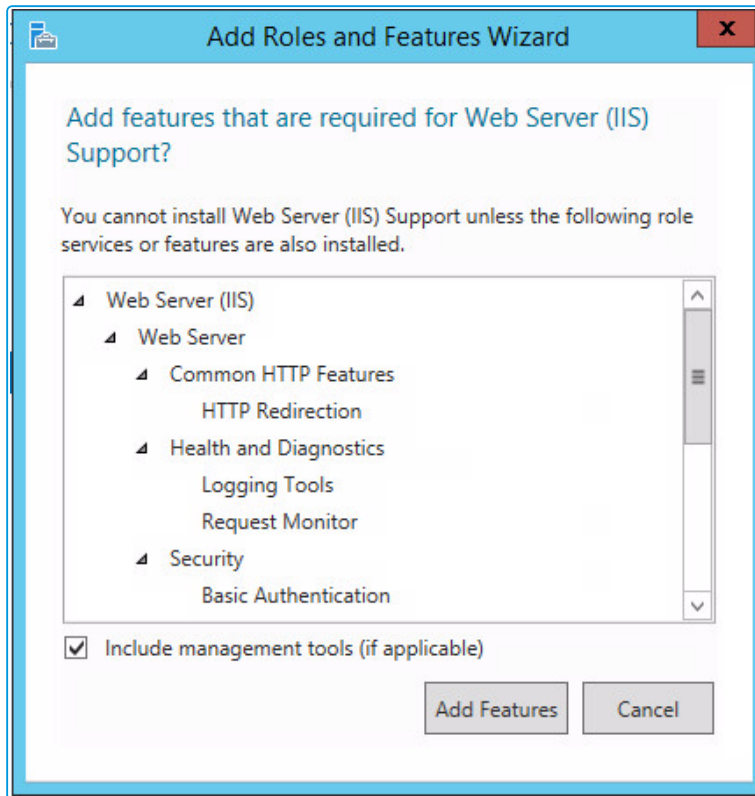


19. Select **Next** to continue.
20. In the **Select role services** window, select the following role services for the application server.

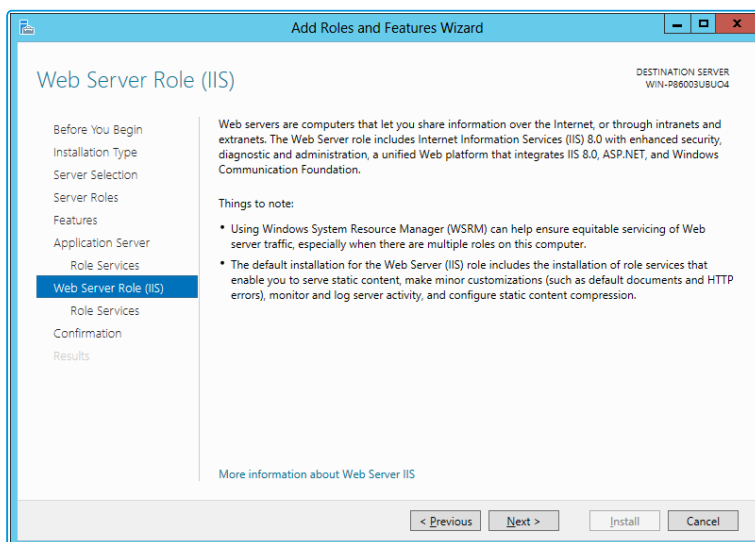




21. When the **Add Roles and Features** window is displayed, add the features.



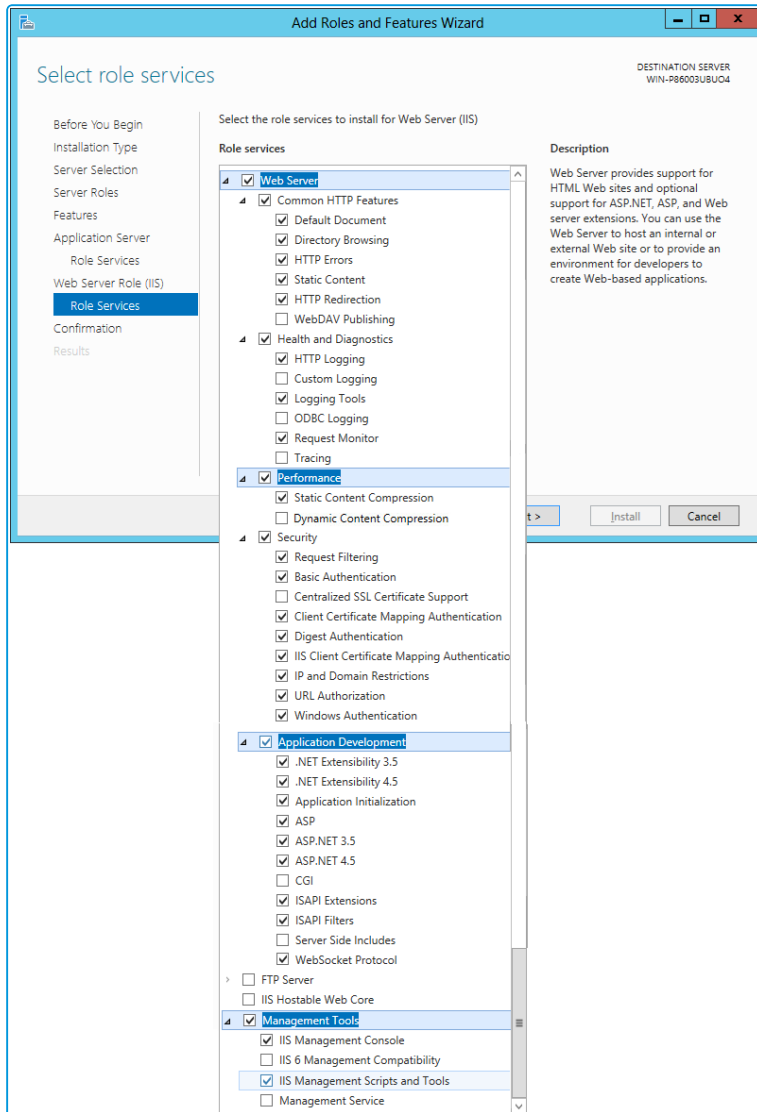
22. Select **Next** to continue.
23. In addition to role services for the **Application Server**, you will need to select Role Services for the Web Server Role (IIS). On the **Web Server Role (IIS)** window, read the information provided.



24. Select **Next** to continue.



25. On the **Select role services** window, ensure that all of the roles shown in the following screenshot are ticked.



vFire Core provides its own **Dynamic Content Compression**, which tests indicate performs slightly better than IIS Dynamic Content Compression. Disabling IIS Dynamic Content Compression is a viable option but not required.

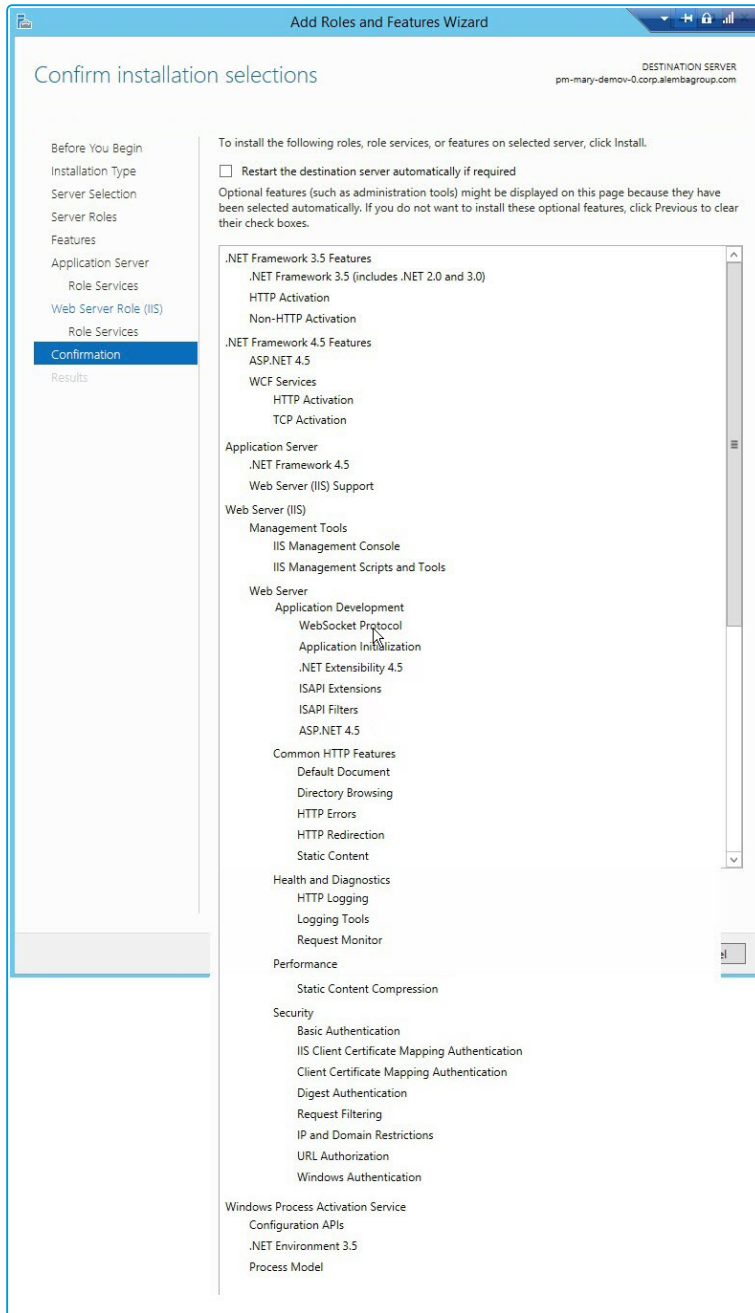


Dynamic Content Compression is automatically enabled in IIS. When disabled, the Web Server (IIS) Support Role is also disabled, therefore, it is recommended you review the Role Services enabled by the Web Server (IIS) Support Role and manually re-enable those required for your environment.

26. Select **Next** to continue.

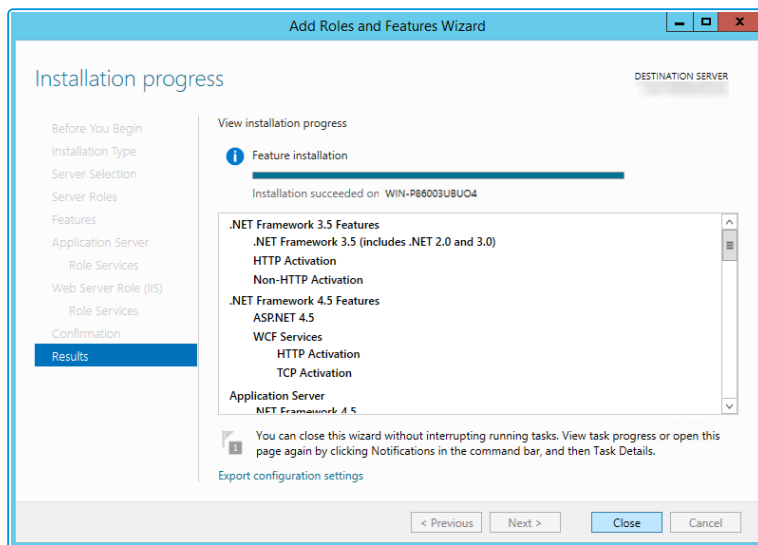


27. In the **Confirm installation selections** window, confirm that you have the following selected. Scroll down to see the details.





28. Select **Install** when you are ready to proceed. When installation is complete, the results window will display all roles, role services and features which have been installed.



29. Select **Close** to close the wizard. The configuration is complete.

What's Next

Once the configuration has been completed, the following components need to be installed:

- Microsoft .NET Framework v4.5.2 (offline installer - click [here](#) to download)
- Windows Management Framework 5.1 for Windows Server 2012 R2 (MSU file - click [here](#) to download)

Finally, on the SQL Server platform, the **Full-Text and Semantic Extractions for Search** feature needs to be enabled. This is required for the **Knowledge As You Type** and **Matching Panel** features in v9.8.



User Directory Servers

The following directory servers are supported by vFire Core.

Directory Server	Version
Microsoft Active Directory	2008
Microsoft Active Directory	2012
Novell eDirectory	8
Sun Java System Directory	5



vFire Officer App Prerequisites

Ensure that your system meets the following prerequisites before configuring your environment for the vFire Officer app.

- You need to be using vFire Core 9.2.2 or above (server version)
- Your mobile device must be able to navigate to the vFire HTML pages delivered via IIS web services. This may require you to configure your firewall.
- You must have a valid vFire login account, and be flagged as an Analyst.
- Ensure that your authentication is correctly configured for the app. See the documentation on **Authentication** in the online help for more details.
- You must know your system name and URL to configure the settings when you first use the app. Your system administrator will provide these.

Specific Versions

The app is supported on the following iOS and Android mobile operating systems:

- Windows Phone 8.1
- iOS versions 7 or higher
- Android versions 4.3 or higher

It has been tested on the following devices. (Other devices are also supported.)

- iPhone 5
- iPhone 6
- Samsung Galaxy S3
- Sony Xperia Z3
- HTC One



Further Information

Product Information and Online Support

For information about Alemba products, licensing and services, visit www.alemba.com.

For release notes and software updates, go to www.alemba.help.

Up-to-date product documentation, training materials and videos can be found at www.alemba.help/help.



You may need to register to access some of these details.

Technical Support

For technical support, please visit: www.alemba.com and select the **vfire support** link. You will need to log in to the alemba self service portal to contact the Alemba Service Desk.

Comments and Feedback

If you have any comments or feedback on this documentation, submit it to info@alembagroup.com.